



NUMERICAL INDEX

022.....	49	7931-1-X	22	C MODELS	
044.....	49	7932.....	18	C-40B.....	49
055.....	49	7932-1.....	18	C-40F.....	49
066.....	49	7932-X.....	18	C-50B.....	49
089.....	53	7932-1-X	18	C-50F.....	49
10-D.....	50	7934.....	20	CC MODELS	
10-H.....	50	7934-1.....	20	01-CC.....	56
10-K.....	50	7934-X.....	20	02-CC.....	57
78-A.....	32	7934-1-X	20	03-CC.....	57
78-B.....	15	7935.....	16	04-CC.....	57
78-D.....	15	7935-1.....	16	05-CC.....	57
78-K.....	15	7935-X.....	17	06-CC.....	57
78-P.....	33	7935-1-X	17	07-CC-L.....	58
78-S.....	15	7936.....	20	07-CC-R.....	58
78-W.....	32	7936-1.....	20	08-CC.....	58
6120-BW	48	7936-X.....	20	09-CC.....	58
6130-BW	48	7936-1-X	20	10-CC-1.....	58
6131-BW	44	7937.....	20	10-CC-2.....	58
6132-BW	44	7937-1.....	20	11-CC.....	59
6134-BW	45	7937-X.....	20	12-CC.....	59
6135-BW	45	7937-1-X	20	13-CC.....	59
6136-BW	43	7940.....	32	14-CC.....	59
6137-BW	46	7940-1.....	32	15-CC.....	59
6150-BW	49	7942.....	36	16-CC.....	59
6151-BW	46	7942-1.....	36	18-CC.....	59
6152-BW	47	7944.....	36		
6153-BW	47	7944-1.....	36	EX MODELS	
7020.....	6	7945.....	37	EX1.....	62
7020-X.....	6	7945-1.....	37	EX2.....	62
7030.....	4	7946.....	37	EX3.....	62
7030-X.....	4	7946-1.....	37	EX4.....	62
7050.....	9	7947.....	37	EX5.....	62
7050-X.....	9	7947-1.....	37	EX6.....	62
7070.....	8	7951.....	21	EX7.....	62
7080.....	8	7951-1.....	21	EX8.....	62
7114.....	15	7951-X.....	21	EX9.....	62
7370-71.....	40	7951-1-X	21	EX10.....	62
7370-71-088	40	7952.....	21	EX11.....	62
7370-72.....	40	7952-1.....	21	EX12.....	62
7370-72-088	40	7952-X.....	21	EX1-O.....	63
7370-73.....	41	7952-1-X	21	EX2-O.....	63
7370-73-088	41	7953.....	21	EX3-O.....	63
7370-74.....	41	7953-1.....	21	EX4-O.....	63
7370-74-088	41	7953-X.....	21	EX5-O.....	63
7810.....	14	7953-1-X	21	EX6-O.....	63
7820.....	15	7955.....	21	EX7-O.....	63
7822.....	10	7955-1.....	21	EX8-O.....	63
7822-X.....	11	8805.....	53	EX9-O.....	63
7830.....	15	8821.....	52	EX10-O.....	63
7831.....	26	8822.....	52	EX11-O.....	63
7831-X.....	26	8922.....	53	EX12-O.....	63
7832.....	26	9721.....	60	SN-1.....	63
7832-X.....	26	9722.....	60	EX21.....	61
7833.....	12	9723.....	60	EX23.....	61
7833-X.....	13	9724.....	60	EX24.....	61
7834.....	24	9725.....	60	EX25.....	61
7834-X.....	25	9726.....	60	EX26.....	61
7835.....	27	9727.....	60	EX27.....	61
7835-X.....	27	9729.....	60	EX28.....	61
7836.....	27	9731.....	60		
7836-X.....	27	9732.....	60	T MODELS	
7837.....	28	9733.....	60	T-60.....	53
7837-X.....	28	9735.....	60	T-66.....	53
7840.....	14	9736.....	60	T-70.....	52
7844.....	12	9737.....	60	T-77.....	52
7844-X.....	12	9741.....	60	T-79.....	52
7851.....	30	9742.....	60	T-88.....	53
7851-X.....	30	9743.....	60		
7852.....	30	9744.....	60		
7852-X.....	30	9745.....	60		
7853.....	31	78322.....	33		
7853-X.....	31	78352.....	32		
7854.....	31	78362.....	32		
7931.....	22				
7931-1.....	22				
7931-X.....	22				

IMPORTANT NOTE TO DISTRIBUTORS DOING BUSINESS IN CALIFORNIA:
Clinton Industries products drop shipping or to our knowledge being reshipped into California will carry appropriate Safe Harbor Warnings in compliance with California Proposition 65.

For more information on California Proposition 65, go to:
www.P65Warnings.ca.gov



It's a fact. Clinton Pediatric Equipment is among the best in the medical equipment business for innovation, design superiority, breadth of line and durable performance. And surprisingly enough, it is among the most affordable.



Our *Clinton Kids™* products feature exclusive graphics. Designed by Clinton illustrators, these colorful graphics create a comfortable, kid-friendly environment for children of all ages.



Completely coordinated. Completely cost effective. Completely easy. Clinton has done the design work for you with our total designed exam room solutions — *Clinton Complete*. Clinton Complete provides package pricing on the purchase of specific tables and coordinating cabinets. Add coordinating graphics and accessories to achieve a total *Clinton Complete* look. Look for *Clinton Complete* designed solutions throughout this catalog.

We invite you to examine our products. Imagine the possibilities, and select the equipment, cabinets, accessories and graphics from the one source that is committed to your pediatric needs.



FUN SERIES TREATMENT TABLES



The Clinton Kids™ Fun Series provides interesting tables in familiar vehicle shapes. They are safe, compact and easy to work around without being too cumbersome for smaller spaces.

Fun Series Treatment Tables feature:

- Large convenient storage capacity with laminate interiors
- No-peel, graphics embedded in high pressure custom laminate
- Easy-clean laminate surfaces
- Tough, premium, knit-backed upholstery
- Levelers under each stationary wheel
- Optional storage locks available (-055)

Engine K-9

- 4 door storage with 3 adjustable shelves
- Doors are positioned on one side only (right side). Reverse side doors are available by special request. (Call for more information)
- Graphics on both sides, front and back

7030	length	width	height
	72"	27"	34"
	182.88 cm	68.58 cm	86.36 cm



opposite side and back detail

⚠ WARNING: This product can expose you to chemicals, including diisononyl phthalate (DINP), which is known to the State of California to cause cancer.
For more information go to www.P65Warnings.ca.gov.



ENGINE K-9 COMPLETE includes
7030 Engine K-9 Treatment Table &
6130-BW Coordinating Cabinets
(see features on page 48)
ADD:
Coordinating Graphics (page 59) shown
here for a total "Engine K-9" exam room
designed environment

For special package discount pricing, ORDER USING MODEL # 7030-X

Zoo Bus

- 4 door storage with 3 adjustable shelves
- Doors are positioned on one side only (right side). Reverse side doors are available by special request. (Call for more information)
- Graphics on both sides, front and back

7020	length	width	height
	72"	27"	34"
	182.88 cm	68.58 cm	86.36 cm



front detail



opposite side and back detail

⚠ WARNING: This product can expose you to chemicals, including diisononyl phthalate (DINP), which is known to the State of California to cause cancer.

For more information go to www.P65Warnings.ca.gov.



ZOO BUS COMPLETE includes
7020 Zoo Bus Treatment Table &
6120-BW Coordinating Cabinets
(see page 48 for cabinet features)
ADD:
Coordinating Graphics (page 58) shown
here for a total "Zoo Bus" exam room
designed environment

For special package discount pricing, ORDER USING MODEL # 7020-X

FUN SERIES TREATMENT TABLES

Frosty Friends Ice Cream Truck

- 4 door storage with 3 adjustable shelves
- Doors are positioned on one side only (right side). Reverse side doors are available by special request. (Call for more information)
- Graphics on both sides, front and back

7070	length	width	height
	72"	27"	34"
	182.88 cm	68.58 cm	86.36 cm



Back & Opposite Side Detail

Wally's Trolley

- 4 door storage with 3 adjustable shelves
- Doors are positioned on one side only (right side). Reverse side doors are available by special request. (Call for more information)
- Graphics on both sides, front and back

7080	length	width	height
	72"	27"	34"
	182.88 cm	68.58 cm	86.36 cm



Back & Opposite Side Detail

⚠ WARNING: Products featured on this page can expose you to chemicals, including diisononyl phthalate (DINP), which is known to the State of California to cause cancer.

For more information go to www.P65Warnings.ca.

Cool Camper

- 4 door storage with 3 adjustable shelves
- Doors are positioned on one side only (right side). Reverse side doors are available by special request. (Call for more information)
- Graphics on both sides, front and back

7050	length	width	height
	72"	27"	34"
	182.88 cm	68.58 cm	86.36 cm



Back & Opposite Side Detail



COOL CAMPER COMPLETE includes 7050 Cool Camper Treatment Table & 6150-BW Coordinating Cabinets (see page 49 for cabinet features)
ADD: COORDINATING GRAPHICS (page 59) shown here for a total "Cool Camper" exam room designed environment

For special package discount pricing, ORDER USING MODEL # 7050-X

⚠ WARNING: This product can expose you to chemicals, including diisononyl phthalate (DINP), which is known to the State of California to cause cancer.

For more information go to www.P65Warnings.ca.gov.

FUN SERIES SCALE TABLES



The Clinton Kids™ Fun Series Scale Tables are the perfect addition to any pediatric office or clinic. Fun shapes are combined with an accurate digital scale and soft safety top for the ultimate in performance and patient comfort.

Fun Series Scale Tables feature:

- Comfortable work height of 36" (91.44 cm)
- Top rimmed on 3 sides for safety
- Beveled edges & rounded corners on top
- Easy-clean, replaceable center pad
- Built-in infantometer
- Easy access to weight measurement and storage
- Built-in concealed paper dispenser & cutter
- Easy-clean laminate surfaces
- Adjustable built-in levelers provide stability
- Ample 2-door storage
- Optional storage locks available (-055)

Doran® Scales feature:

- Dependable, accurate Doran® scale
- Easy-read digital display
- Auto calibration on start-up
- Auto shut-off
- Electric or battery operation
- English or Metric weights
- Maximum weight 40 lbs. (18.14 kg)

Zoo Bus Scale Table

- 1 end door and 1 side door storage with 1 adjustable shelf
- Graphics on 1 side, front and back

7822	top length	top width	
	43"	24"	
	109.22 cm	60.96 cm	
	base length	base width	base height
	47"	21"	36"
	119.38 cm	53.34 cm	91.44 cm



top rimmed on 3 sides



beveled sides & rounded corners



infantometer



Fun Series digital readout mount



back detail

⚠ WARNING: This product can expose you to chemicals, including diisononyl phthalate (DINP), which is known to the State of California to cause cancer.

For more information go to www.P65Warnings.ca.gov.



ZOO BUS SCALE COMPLETE includes
7822 Zoo Bus Scale Table &
6120-BW Coordinating Cabinets
(see page 48 for cabinet features)
ADD:
COORDINATING GRAPHICS (pages 58
& 62) shown here for a total "Zoo Bus"
exam room designed environment

For special package discount pricing, ORDER USING MODEL # 7822-X

FUN SERIES TREATMENT TABLES

Engine K-9 Scale Table

- 1 end door and 1 side door storage with 1 adjustable shelf
- Graphics on 1 side, front and back

7833	top length	top width	
	43"	24"	
	109.22 cm	60.96 cm	
	base length	base width	base height
	47"	21"	36"
	119.38 cm	53.34 cm	91.44 cm



back detail

Outback Buggy Scale Table

- 1 end door and 1 side door storage with 1 adjustable shelf
- Graphics on 1 side, front and back

7844	top length	top width	
	43"	24"	
	109.22 cm	60.96 cm	
	base length	base width	base height
	47"	21"	36"
	119.38 cm	53.34 cm	91.44 cm

OUTBACK BUGGY SCALE COMPLETE

—discount package pricing when combining 7844 table with coordinating cabinets (see page 47 for cabinets and features)

7844-X Must order using this model # for package discount



back detail

⚠ WARNING: Products featured on this page can expose you to chemicals, including diisononyl phthalate (DINP), which is known to the State of California to cause cancer.

For more information go to www.P65Warnings.ca.gov.



ENGINE K-9 SCALE COMPLETE includes
7833 Engine K-9 Scale Table &
6130-BW Coordinating Cabinets
(see page 48 for cabinet features)
ADD:
COORDINATING GRAPHICS (page 59)
shown here for a total "Engine K-9"
exam room designed environment

For special package discount pricing, ORDER USING MODEL # 7833-X

SELECT SERIES SCALE TABLES

The Clinton Select Series Scale Tables offer a wide range of features, and are available in over a dozen laminate colors for the front. Add pediatric fun by customizing with exclusive Clinton Scale Pals™, or Select Series Graphics (see page 63 for full list of graphics).

Select Series Scale Tables feature:

- Comfortable work height of 36" (91.44 cm)
- Top is rimmed on three sides for safety
- Top's front and back rim edges are beveled and the corners rounded for safety
- Easy-clean, replaceable center pad
- Built-in infantometer with folding ends for measuring height
- Easy access to weight, measurement and storage
- Built-in concealed paper dispenser at both ends
- Recessed front toe kick
- Easy-clean all laminate base
- Ample storage with various door and drawer configurations
- Optional storage area locks available



7840



Select Series digital readout mount

See page 10 for additional Doran® scale features.



7810

Pediatric Scale/Treatment Table

- Features 2 drawers and 2 doors

7840	length	width	height
	43"	24"	36"
	109.22 cm	60.96 cm	91.44 cm

Pediatric Scale/Treatment Table

- Features 1 drawer and 2 open shelves

7810	length	width	height
	43"	24"	36"
	109.22 cm	60.96 cm	91.44 cm

Pediatric Scale/Treatment Table

- Features 2 doors with 1 adjustable shelf

7820	length	width	height
	43"	24"	36"
	109.22 cm	60.96 cm	91.44 cm



7830

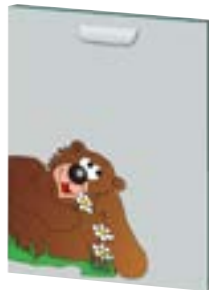


7820

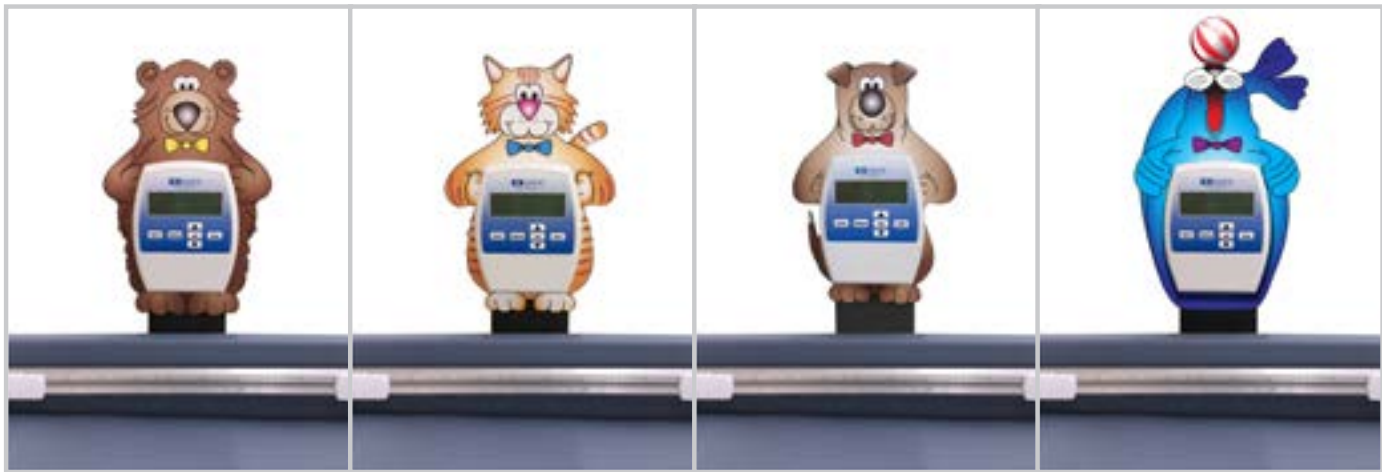
Pediatric Scale/Treatment Table

- Features 2 doors and 1 drawer

7830	length	width	height
	43"	24"	36"
	109.22 cm	60.96 cm	91.44 cm



Add Select Series graphics (see page 59) to doors and drawer fronts, or a ScalePal™ to Select Series Tables for a fun custom look.



Option 78-B Bear

Option 78-K Kitty

Option 78-D Doggie

Option 78-S Seal

! WARNING: Products featured on this page can expose you to chemicals, including diisononyl phthalate (DINP), which is known to the State of California to cause cancer.

For more information go to www.P65Warnings.ca.gov.

! WARNING: Scale Tables featured on this page can expose you to chemicals, including diisononyl phthalate (DINP), which is known to the State of California to cause cancer. Select Series Graphics and ScalePals™ featured on this page can expose you to chemicals, including vinyl chloride, which is known to the State of California to cause cancer.

For more information go to www.P65Warnings.ca.gov.

IMAGINATION SERIES TREATMENT TABLES



Imagine being and astronaut, living under the sea or even lounging on an iceberg with your arctic pals. Clinton Kids™ Imagination Series brings the world of make-believe to life in a collection of comfortable, easy to use tables that feature brightly colored illustrations that stir the imagination.

- Imagination Series Treatment Tables feature:*
- Clinton original illustrations
 - Easy to clean laminate surfaces
 - All graphics are permanently embedded in the high pressure laminate and will not peel off
 - 2" (5.08 cm) of firm foam padding
 - 4 door storage with 2 adjustable shelves
 - Slate Gray ends and backs
 - Scratch and mar resistant surfaces
 - Chip resistant PVC edges
 - Premium, stain-resistant, woven, knit-backed vinyl upholstery
 - *All models feature Clinton Complete™ pricing when combined with coordinating cabinets*

Space Place Treatment Table

- 4-door storage with 2 adjustable shelves and adjustable backrest

7935	length	width	height
	68"	27"	33"
	172.72 cm	68.58 cm	83.82 cm

7935-1 Same as 7935 without adjustable backrest

⚠ WARNING: This product can expose you to chemicals, including diisononyl phthalate (DINP), which is known to the State of California to cause cancer.

For more information go to www.P65Warnings.ca.gov.



SPACE PLACE COMPLETE includes
7935 Space Place Treatment Table &
6135-BW Coordinating Cabinets
(see page 43 for cabinet features)
ADD:
COORDINATING GRAPHICS (page 56)
shown here for a total "Space Place"
exam room designed environment

For special package discount pricing, ORDER USING MODEL # 7935-X

For special package discount pricing with table 7835-1, USE # 7935-1-X

IMAGINATION SERIES
TREATMENT TABLES

Rainforest Follies Treatment Table

- 4-door storage with 2 adjustable shelves and adjustable backrest

7932	length	width	height
	68"	27"	33"
	172.72 cm	68.58 cm	83.82 cm

7932-1 Same as 7932 without adjustable backrest



*RAINFOREST FOLLIES COMPLETE includes
7932 Rainforest Follies Treatment Table &
6132-BW Coordinating Cabinets
(see page 42 for cabinet features)*

*ADD:
Coordinating Graphics (page 57) shown
here for a total "Rainforest Follies" exam
room designed environment*

For special package discount pricing, ORDER USING MODEL # 7932-X

For special package discount pricing with table 7832-1, USE # 7932-1-X

⚠ WARNING: This product can expose you to chemicals, including diisononyl phthalate (DINP), which is known to the State of California to cause cancer.

For more information go to
www.P65Warnings.ca.gov.



Dino Days Treatment Table

- 4-door storage with 2 adjustable shelves and adjustable backrest

7934	length	width	height
	68"	27"	33"
	173 cm	69 cm	84 cm

7934-1 Same as 7934 without adjustable backrest

DINO DAYS COMPLETE—discount package pricing when combining table with coordinating cabinets (see page 43 for cabinets and features)

7934-X Must order using this model # for package discount

7934-1-X Must order using this model # for package discount



Ocean Commotion Treatment Table

- 4-door storage with 2 adjustable shelves and adjustable backrest

7936	length	width	height
	68"	27"	33"
	173 cm	69 cm	84 cm

7936-1 Same as 7936 without adjustable backrest

OCEAN COMMOTION COMPLETE—discount package pricing when combining table with coordinating cabinets (see page 40 for cabinets and features)

7936-X Must order using this model # for package discount

7936-1-X Must order using this model # for package discount



Alley Cats & Dogs Treatment Table

- 4-door storage with 2 adjustable shelves and adjustable backrest

7937	length	width	height
	68"	27"	33"
	173 cm	69 cm	84 cm

7937-1 Same as 7937 without adjustable backrest

ALLEY CATS & DOGS COMPLETE—discount package pricing when combining table with coordinating cabinets (see page 44 for cabinets and features)

7937-X Must order using this model # for package discount

7937-1-X Must order using this model # for package discount



Serengeti Sunrise Treatment Table

- 4-door storage with 2 adjustable shelves and adjustable backrest

7951	length	width	height
	68"	27"	33"
	173 cm	69 cm	84 cm

7951-1 Same as 7951 without adjustable backrest

SERENGETI SUNRISE COMPLETE—discount package pricing when combining table with coordinating cabinets (see page 44 for cabinets and features)

7951-X Must order using this model # for package discount

7951-1-X Must order using this model # for package discount



Southwestfest Treatment Table

- 4-door storage with 2 adjustable shelves and adjustable backrest

7952	length	width	height
	68"	27"	33"
	173 cm	69 cm	84 cm

7952-1 Same as 7952 without adjustable backrest

SOUTHWESTFEST COMPLETE—discount package pricing when combining table with coordinating cabinets (see page 44 for cabinets and features)

7952-X Must order using this model # for package discount

7952-1-X Must order using this model # for package discount



Kangaroo Country Treatment Table

- 4-door storage with 2 adjustable shelves and adjustable backrest

7953	length	width	height
	68"	27"	33"
	173 cm	69 cm	84 cm

7953-1 Same as 7953 without adjustable backrest

KANGAROO COUNTRY COMPLETE—discount package pricing when combining table with coordinating cabinets (see page 45 for cabinets and features)

7953-X Must order using this model # for package discount

7953-1-X Must order using this model # for package discount



DOWNLOAD A FUN FACT SHEET ABOUT THE ANIMALS PICTURED ON THE TABLE AT:
<https://www.clinton-ind.com/catalogs#alphabet-animals-fun-facts>

Alphabet Animals Treatment Table

- 4-door storage with 2 adjustable shelves and adjustable backrest

7955	length	width	height
	68"	27"	33"
	173 cm	69 cm	84 cm

7955-1 Same as 7953 without adjustable backrest

WARNING: Products featured on this page can expose you to chemicals, including diisononyl phthalate (DINP), which is known to the State of California to cause cancer.

For more information go to www.P65Warnings.ca.gov.

WARNING: Products featured on this page can expose you to chemicals, including diisononyl phthalate (DINP), which is known to the State of California to cause cancer.

For more information go to www.P65Warnings.ca.gov.

IMAGINATION SERIES
TREATMENT TABLES

Cool Pals Treatment Table

- 4-door storage with 2 adjustable shelves and adjustable backrest

7931	length	width	height
	68"	27"	33"
	172.72 cm	68.58 cm	83.82 cm

7931-1 Same as 7931 without adjustable backrest



COOL PALS COMPLETE includes: 7931 Cool Pals Treatment Table & 6131-BW Coordinating Cabinets (see page 42 for cabinet features)
ADD:
Coordinating Graphics (page 56) shown here for a total "Cool Pals" exam room designed environment

For special package discount pricing, ORDER USING MODEL # 7931-X

For special package discount pricing with table 7831-1, USE # 7931-1-X

⚠ WARNING: This product can expose you to chemicals, including diisononyl phthalate (DINP), which is known to the State of California to cause cancer.

For more information go to www.P65Warnings.ca.gov.



Cool Pals Complete Exam Room uses four colors of floor covering to simulate a 3-dimensional iceberg effect.

IMAGINATION SERIES SCALE TABLES



The Clinton Kids™ Imagination Series Scale Tables take office decor to a new dimension with bright illustrations and the ultimate in comfort, performance and accuracy.

- Imagination Series Scale Tables feature:
- Comfortable work height of 36" (91.44 cm)
 - Top rimmed on 3 sides for safety
 - Beveled edges & rounded corners on top
 - Easy-clean, replaceable center pad
 - Built-in infantometer
 - Easy access to weight measurement and storage
 - Built-in concealed paper dispenser
 - Easy-clean laminate surfaces
 - Ample 2-door and 1 drawer storage
 - Optional storage locks available (-055)
 - All models feature Clinton Complete™ pricing when combined with coordinating cabinets



Imagination Series digital readout mount

See page 10 for additional Doran® scale features.

Dino Days Scale Table

- 2-door and 1 drawer storage

7834	length	width	height
	43"	24"	36"
	109.22 cm	60.96 cm	91.44 cm

⚠ WARNING: This product can expose you to chemicals, including diisononyl phthalate (DINP), which is known to the State of California to cause cancer.

For more information go to www.P65Warnings.ca.gov.



DINO DAYS SCALE COMPLETE includes
7834 Dino Days Scale Table &
6134-BW Coordinating Cabinets (page 43)
ADD:
Coordinating Graphics shown here
(page 57) for a total "Dino Days" exam
room designed environment

For special package discount pricing, ORDER USING MODEL # 7834-X



right side detail



left side detail

IMAGINATION SERIES SCALE TABLES

Cool Pals Scale Table

- 2-door and 1 drawer storage

7831	length	width	height
	43"	24"	36"
	109.22 cm	60.96 cm	91.44 cm

COOL PALS SCALE COMPLETE—discount package pricing when combining 7831 table with coordinating cabinets (see page 42 for cabinets and features)

7831-X Must order using this model # for package discount



right side detail

left side detail



Rainforest Follies Scale Table

- 2-door and 1 drawer storage

7832	length	width	height
	43"	24"	36"
	109.22 cm	60.96 cm	91.44 cm

RAINFOREST FOLLIES SCALE COMPLETE—discount package pricing when combining 7832 table with coordinating cabinets (see page 42 for cabinets and features)

7832-X Must order using this model # for package discount



right side detail

left side detail



! WARNING: Products featured on this page can expose you to chemicals, including diisononyl phthalate (DINP), which is known to the State of California to cause cancer.

For more information go to www.P65Warnings.ca.gov.

Space Place Scale Table

- 2-door and 1 drawer storage

7835	length	width	height
	43"	24"	36"
	109.22 cm	60.96 cm	91.44 cm

SPACE PLACE SCALE COMPLETE—discount package pricing when combining 7835 table with coordinating cabinets (see page 43 for cabinets and features)

7835-X Must order using this model # for package discount



right side detail

left side detail



Ocean Commotion Scale Table

- 2-door and 1 drawer storage

7836	length	width	height
	43"	24"	36"
	109.22 cm	60.96 cm	91.44 cm

OCEAN COMMOTION SCALE COMPLETE—discount package pricing when combining 7836 table with coordinating cabinets (see page 40 for cabinets and features)

7836-X Must order using this model # for package discount



right side detail

left side detail



! WARNING: Products featured on this page can expose you to chemicals, including diisononyl phthalate (DINP), which is known to the State of California to cause cancer.

For more information go to www.P65Warnings.ca.gov.

Alley Cats & Dogs Scale Table

- 2-door and 1 drawer storage

7837	length	width	height
	43"	24"	36"
	109.22 cm	60.96 cm	91.44 cm



ALLEY CATS & DOGS SCALE COMPLETE includes
7837 Alley Cats & Dogs Scale Table & 6137-BW
Coordinating Cabinets (page 44)

ADD:
Coordinating Graphics shown here (page 55) for
a total "Alley Cats & Dogs" exam room designed
environment

For special package discount pricing, ORDER USING MODEL # 7837-X

⚠ WARNING: This product can expose you
to chemicals, including diisononyl phthalate
(DINP), which is known to the State of
California to cause cancer.

For more information go to
www.P65Warnings.ca.gov.



IMAGINATION SERIES SCALE TABLES

Serengeti Sunrise Scale Table

- 2-door and 1 drawer storage

7851	length	width	height
	43"	24"	36"
	109.22 cm	60.96 cm	91.44 cm

SERENGETI SUNRISE SCALE COMPLETE—discount package pricing when combining 7851 table with coordinating cabinets (see page 44 for cabinets and features)

7851-X Must order using this model # for package discount



Southwestfest Scale Table

- 2-door and 1 drawer storage

7852	length	width	height
	43"	24"	36"
	109.22 cm	60.96 cm	91.44 cm

SOUTHWESTFEST SCALE COMPLETE—discount package pricing when combining 7852 table with coordinating cabinets (see page 45 for cabinets and features)

7852-X Must order using this model # for package discount



WARNING: Products featured on this page can expose you to chemicals, including diisononyl phthalate (DINP), which is known to the State of California to cause cancer.
For more information go to www.P65Warnings.ca.gov.

Kangaroo Country Scale Table

- 2-door and 1 drawer storage

7853	length	width	height
	43"	24"	36"
	109.22 cm	60.96 cm	91.44 cm

KANGAROO COUNTRY SCALE COMPLETE—discount package pricing when combining 7853 table with coordinating cabinets (see page 45 for cabinets and features)

7853-X Must order using this model # for package discount



Merry Mermaids Scale Table

- 2-door and 1 drawer storage
- Paper dispenser from either side

7854	length	width	height
	43"	24"	36"
	109.22 cm	60.96 cm	91.44 cm



WARNING: Products featured on this page can expose you to chemicals, including diisononyl phthalate (DINP), which is known to the State of California to cause cancer.
For more information go to www.P65Warnings.ca.gov.

IMAGINATION SERIES SCALE TABLES OS

Because they are designed by Clinton Scale Tables OS feature popular Clinton Kids themes, and because they ship knocked down with easy assembly they are more affordable than our standard graphic scale tables.

Imagination Series Scale Tables OS feature:

- Comfortable work height of 36" (91.44 cm)
- Top is rimmed on three sides for safety
- Top's front and back rim edges are beveled and the corners rounded for safety
- Easy-clean, replaceable center pad
- Built-in infantometer with folding ends for measuring height
- Easy access to weight, measurement and storage
- Paper dispenser
- Two drawer and open shelf storage
- Adjustable built-in levelers provide a stable surface
- Easy-clean all laminate base
- Ships knocked down to save on freight



Select Series digital readout mount

See page 4 for additional Doran® scale features.

WARNING: This product can expose you to chemicals, including chromium, which is known to the State of California to cause cancer and reproductive harm.

For more information go to www.P65Warnings.ca.gov.



Option 78-A Astronaut

CLINTON INDUSTRIES
Scale Pals

Space Place Scale Table OS

- Space Place laminate on front
- Slate Gray sides and shelf
- 2 drawers and open shelf storage
- Easy-clean Gunmetal vinyl top

78352	length	width	height
	43"	24"	36"
	109.22 cm	60.96 cm	91.44 cm



Option 78-W Whale

CLINTON INDUSTRIES
Scale Pals

Ocean Commotion Scale Table OS

- Ocean Commotion laminate on front
- Slate Gray sides and shelf
- 2 drawers and open shelf storage
- Easy-clean Gunmetal vinyl top

78362	length	width	height
	43"	24"	36"
	109.22 cm	60.96 cm	91.44 cm



Option 78-P Parrot

CLINTON INDUSTRIES
Scale Pals

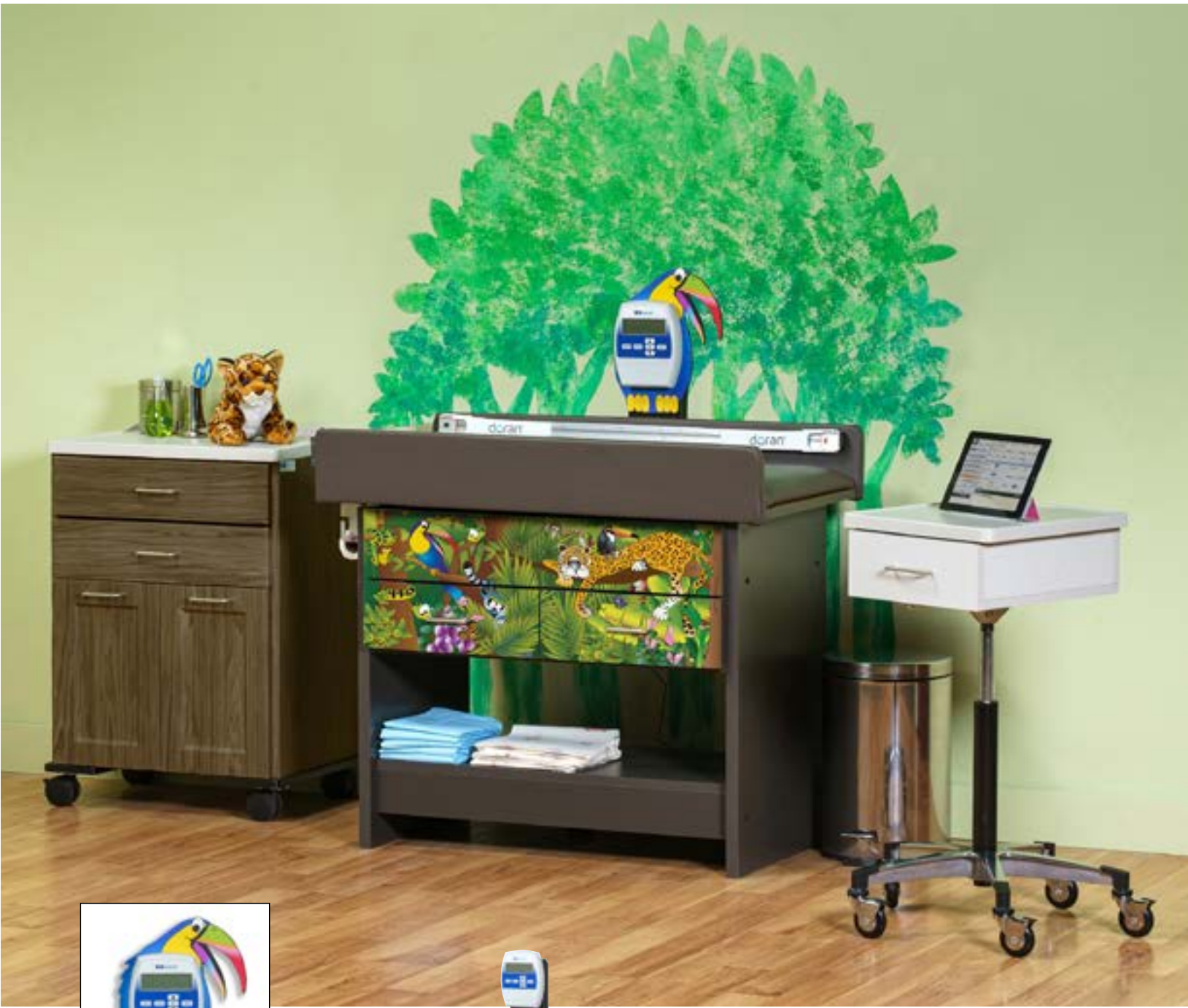


Rainforest Follies Scale Table OS

- Rainforest Follies laminate on front
- Slate Gray sides and shelf
- 2 drawers and open shelf storage
- Easy-clean Gunmetal vinyl top

78322	length	width	height
	43"	24"	36"
	109.22 cm	60.96 cm	91.44 cm

WARNING: This product can expose you to chemicals, including chromium, which is known to the State of California to cause cancer and reproductive harm. Scale Pals can expose you to chemicals, including vinyl chloride, which is known to the State of California to cause cancer. For more information go to www.P65Warnings.ca.gov.



ADVENTURE SERIES TREATMENT TABLES



Take young patients on safari, down under or on a visit to America’s icons. Clinton’s Adventure Series Treatment Tables offer vivid photo collages to engage school-aged children.

Adventure Series Treatment Tables feature:

- Clinton original adventures
- Easy to clean laminate surfaces
- All graphics are permanently embedded in the high pressure laminate and will not peel off
- 2" (5.08 cm) of firm foam padding
- 4 door storage with 2 adjustable shelves
- Slate Gray ends and backs
- Scratch and mar resistant surfaces
- Chip resistant PVC edges
- Premium, stain-resistant, woven, knit-backed vinyl upholstery in Gunmetal

Safari Treatment Table

- 4-door storage with 2 adjustable shelves and adjustable backrest

7940	length	width	height
	68"	27"	33"
	172.72 cm	68.58 cm	83.82 cm

7940-1 Same as 7940 without adjustable backrest

⚠ WARNING: This product can expose you to chemicals, including diisononyl phthalate (DINP), which is known to the State of California to cause cancer.

For more information go to www.P65Warnings.ca.gov.



Down Under Treatment Table

- 4-door storage with 2 adjustable shelves and adjustable backrest

7942	length	width	height
	68"	27"	33"
	172.72 cm	68.58 cm	83.82 cm

7942-1 Same as 7942 without adjustable backrest



Cosmos Treatment Table

- 4-door storage with 2 adjustable shelves and adjustable backrest

7944	length	width	height
	68"	27"	33"
	172.72 cm	68.58 cm	83.82 cm

7944-1 Same as 7944 without adjustable backrest



Americana Treatment Table

- 4-door storage with 2 adjustable shelves and adjustable backrest

7945	length	width	height
	68"	27"	33"
	172.72 cm	68.58 cm	83.82 cm

7945-1 Same as 7945 without adjustable backrest



Alaskan Wilderness Treatment Table

- 4-door storage with 2 adjustable shelves and adjustable backrest

7946	length	width	height
	68"	27"	33"
	172.72 cm	68.58 cm	83.82 cm

7946-1 Same as 7947 without adjustable backrest



Equestrian Treatment Table

- 4-door storage with 2 adjustable shelves and adjustable backrest

7947	length	width	height
	68"	27"	33"
	172.72 cm	68.58 cm	83.82 cm

7947-1 Same as 7947 without adjustable backrest



⚠ WARNING: Products featured on this page can expose you to chemicals, including diisononyl phthalate (DINP), which is known to the State of California to cause cancer.

For more information go to www.P65Warnings.ca.gov.

⚠ WARNING: Products featured on this page can expose you to chemicals, including diisononyl phthalate (DINP), which is known to the State of California to cause cancer.

For more information go to www.P65Warnings.ca.gov.



Discover four brown eggs! Discover four cats, four birds or four little mice hiding in the pictures of our Discover Series Tables. Keeping children engaged in discovery while waiting for the doctor makes every visit easy on staff and parents.

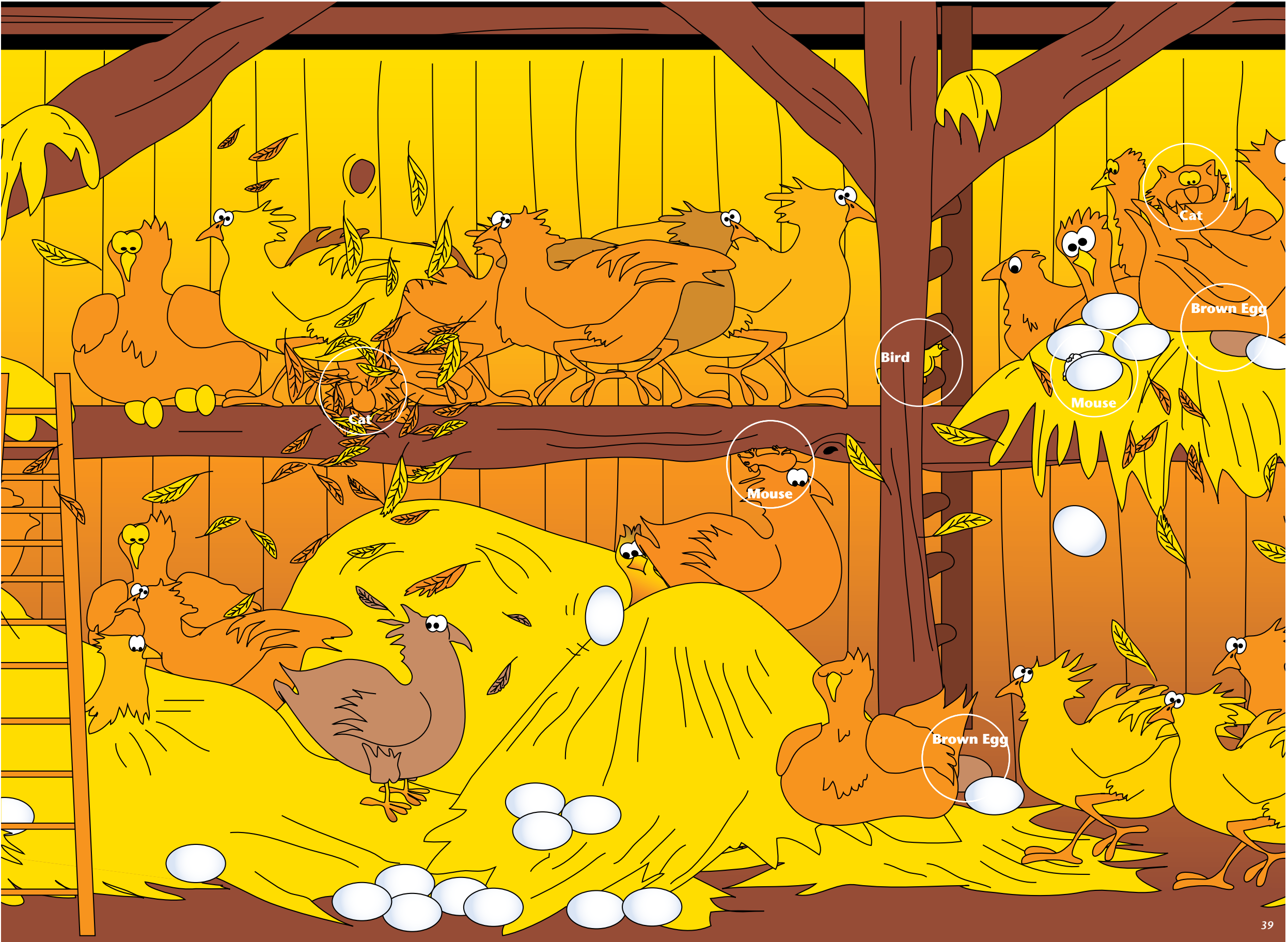
Discover Series Treatment Tables feature:

- Clinton original discovery illustrations
- Easy to clean laminate surfaces
- All graphics are permanently embedded in the high pressure laminate and will not peel off
- 2" (5.08 cm) of firm foam padding
- 4-door storage with 2 adjustable shelves
- Gray ends and backs
- Scratch and mar resistant surfaces
- Chip resistant PVC edges
- Premium, stain-resistant, woven, knit-backed vinyl upholstery in your choice of color

Here's how it works.

Hidden in each scene there are **4 Brown Eggs, 4 Cats, 4 Birds, and 4 Mice**. Keep the number of objects a secret. Ask the young patient how many of any one of the objects they can find. Whether it's all or a few, every child's answer is correct.

Next visit ask them to find one of the other three remaining objects and keep them amused for several visits to come.



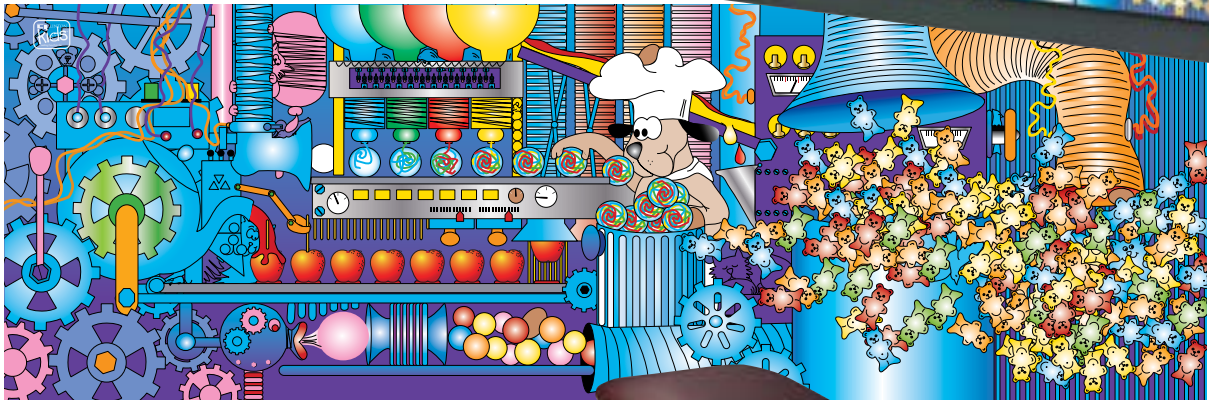
DISCOVER SERIES SCALE TABLES

Sweet Dreams Candy Factory
Treatment Table

- 4-door storage with 2 adjustable shelves and adjustable backrest
- Picture object map included

7370-71	length	width	height
	72"	27"	31"
	182.88 cm	68.58 cm	78.74 cm

7370-71-088 Same as 7370-71 without adjustable backrest



Wings 'N Things Treatment Table

- 4-door storage with 2 adjustable shelves and adjustable backrest
- Picture object map included

7370-72	length	width	height
	72"	27"	31"
	182.88 cm	68.58 cm	78.74 cm

7370-72-088 Same as 7370-72 without adjustable backrest



Secret Garden Treatment Table

- 4-door storage with 2 adjustable shelves and adjustable backrest
- Picture object map included

7370-73	length	width	height
	72"	27"	31"
	182.88 cm	68.58 cm	78.74 cm

7370-73-088 Same as 7370-73 without adjustable backrest

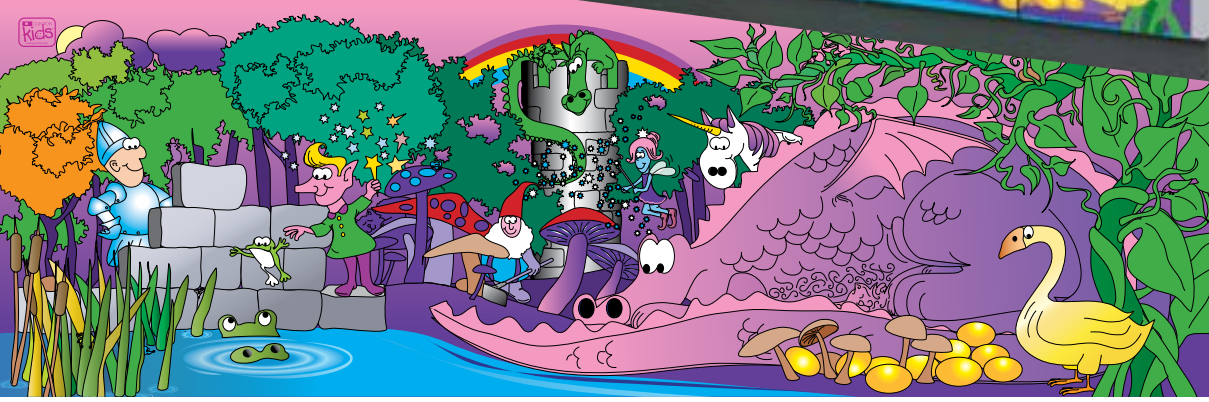


Fairy Tale Dale Treatment Table

- 4-door storage with 2 adjustable shelves and adjustable backrest
- Picture object map included

7370-74	length	width	height
	72"	27"	31"
	182.88 cm	68.58 cm	78.74 cm

7370-74-088 Same as 7370-74 without adjustable backrest



! WARNING: Products featured on this page can expose you to chemicals, including diisononyl phthalate (DINP), which is known to the State of California to cause cancer.

For more information go to www.P65Warnings.ca.gov.

! WARNING: Products featured on this page can expose you to chemicals, including diisononyl phthalate (DINP), which is known to the State of California to cause cancer.

For more information go to www.P65Warnings.ca.gov.



OCEAN COMMOTION COMPLETE includes 6136-BW Ocean Commotion Cabinets & Coordinating Treatment or Scale Table (see pages 20 & 27 for tables and features)

ADD:

Coordinating Graphics (pages 55 & 56) shown here for a total "Ocean Commotion" exam room designed environment

For package price with Treatment Table, ORDER USING MODEL #s 7936-X or 7936-1-X

For package price with Scale Table, ORDER USING MODEL # 7836-X

Clinton Imagination Series Cabinets are the perfect complement for Imagination Series treatment and scale tables.

Imagination Series Cabinets feature:

- Clinton original illustrations
- Pre-assembled
- Easy hook and rail wall cabinet installation
- Recessed toe kick
- Easy-clean interior & exterior laminate surfaces
- All graphics are permanently embedded in the high pressure laminate and will not peel off
- Chip resistant PVC edges
- Steel fastener assembly
- Slate Gray ends and tops
- Scratch and mar resistant surfaces
- 4 adjustable, leveling feet
- Euro-style drawer fronts with metal sides and 75 lbs. (34.01 kg) capacity
- Black door and drawer pulls
- 3-way adjustable, 110°, soft close hinges
- All units shown with optional sink
- *Customize by changing sink location or adding other options (See page 49 for all options.)*
- *All models feature Clinton Complete™ pricing when combined with coordinating tables.*

Ocean Commotion Base & Wall Cabinets

- Wall unit has 4 doors/2 adjustable shelves
- Base unit has 4 doors/3 adjustable shelves and 3 drawers
- Base & wall units not sold separately

6136-BW (base & wall cabinets are only sold in sets)

base	length	depth	height
	61"	18"	35"
	154.94 cm	45.72 cm	88.9 cm
wall	length	depth	height
	61"	12"	24"
	154.94 cm	30.48 cm	60.96 cm

⚠ WARNING: This product can expose you to chemicals, including chromium, which is known to the State of California to cause cancer or reproductive toxicity.

For more information go to www.P65Warnings.ca.gov.

IMAGINATION SERIES CABINETS

Cool Pals Base & Wall Cabinets

- Wall unit has 4 doors/2 adjustable shelves
- Base unit has 4 doors/3 adjustable shelves and 3 drawers
- Base & wall units not sold separately
- Base unit shown with optional sink

6131-BW (base & wall cabinets are only sold in sets)

base	length	depth	height
	61"	18"	35"
	154.94 cm	45.72 cm	88.9 cm

wall	length	depth	height
	61"	12"	24"
	154.94 cm	30.48 cm	60.96 cm

COOL PALS COMPLETE—discount package pricing when combining 6131-BW cabinets with coordinating tables (see pages 22 & 26 for tables and features)

For package price with Treatment Table, ORDER USING MODEL #s 7931-X or 7931-1-X

For package price with Scale Table, ORDER USING MODEL # 7831-X



Rainforest Follies Base & Wall Cabinets

- Wall unit has 4 doors/2 adjustable shelves
- Base unit has 4 doors/3 adjustable shelves and 3 drawers
- Base & wall units not sold separately
- Base unit shown with optional sink

6132-BW (base & wall cabinets are only sold in sets)

base	length	depth	height
	61"	18"	35"
	154.94 cm	45.72 cm	88.9 cm

wall	length	depth	height
	61"	12"	24"
	154.94 cm	30.48 cm	60.96 cm

RAINFOREST FOLLIES COMPLETE—discount package pricing when combining 6132-BW cabinets with coordinating tables (see pages 18 & 28 for tables and features)

For package price with Treatment Table, ORDER USING MODEL #s 7932-X or 7932-1-X

For package price with Scale Table, ORDER USING MODEL # 7832-X



! WARNING: WARNING: Products featured on this page can expose you to chemicals, including chromium, which is known to the State of California to cause cancer or reproductive toxicity.

For more information go to www.P65Warnings.ca.gov.



Dino Days Base & Wall Cabinets

- Wall unit has 4 doors/2 adjustable shelves
- Base unit has 4 doors/3 adjustable shelves and 3 drawers
- Base & wall units not sold separately
- Base unit shown with optional sink

6134-BW (base & wall cabinets are only sold in sets)

base	length	depth	height
	61"	18"	35"
	154.94 cm	45.72 cm	88.9 cm

wall	length	depth	height
	61"	12"	24"
	154.94 cm	30.48 cm	60.96 cm

DINO DAYS COMPLETE—discount package pricing when combining 6134-BW cabinets with coordinating tables (see pages 20 & 24 for tables and features)

For package price with Treatment Table, ORDER USING MODEL #s 7934-X or 7934-1-X

For package price with Scale Table, ORDER USING MODEL # 7834-X



Space Place Base & Wall Cabinets

- Wall unit has 4 doors/2 adjustable shelves
- Base unit has 4 doors/3 adjustable shelves and 3 drawers
- Base & wall units not sold separately
- Base unit shown with optional sink

6135-BW (base & wall cabinets are only sold in sets)

base	length	depth	height
	61"	18"	35"
	154.94 cm	45.72 cm	88.9 cm

wall	length	depth	height
	61"	12"	24"
	154.94 cm	30.48 cm	60.96 cm

SPACE PLACE COMPLETE—discount package pricing when combining 6135-BW cabinets with coordinating tables (see pages 16 & 27 for tables and features)

For package price with Treatment Table, ORDER USING MODEL #s 7935-X or 7935-1-X

For package price with Scale Table, ORDER USING MODEL # 7835-X

! WARNING: Products featured on this page can expose you to chemicals, including chromium, which is known to the State of California to cause cancer or reproductive toxicity.

For more information go to www.P65Warnings.ca.gov.

IMAGINATION SERIES CABINETS

Alley Cats & Dogs Base & Wall Cabinets

- Wall unit has 4 doors/2 adjustable shelves
- Base unit has 4 doors/3 adjustable shelves and 3 drawers
- Base & wall units not sold separately
- Base unit shown with optional sink

6137-BW (base & wall cabinets are only sold in sets)

base	length	depth	height
	61"	18"	35"
	154.94 cm	45.72 cm	88.9 cm

wall	length	depth	height
	61"	12"	24"
	154.94 cm	30.48 cm	60.96 cm

ALLEY CATS & DOGS COMPLETE—discount package pricing when combining 6137-BW cabinets with coordinating tables (see pages 20 & 28 for tables and features)

For package price with Treatment Table, ORDER USING MODEL #s 7937-X or 7937-1-X

For package price with Scale Table, ORDER USING MODEL # 7837-X

Serengeti Sunrise Base & Wall Cabinets

- Wall unit has 4 doors/2 adjustable shelves
- Base unit has 4 doors /3 adjustable shelves and 3 drawers
- Base & wall units not sold separately
- Base unit shown with optional sink

6151-BW (base & wall cabinets are only sold in sets)

base	length	depth	height
	61"	18"	35"
	154.94 cm	45.72 cm	88.9 cm

wall	length	depth	height
	61"	12"	24"
	154.94 cm	30.48 cm	60.96 cm

SERENGETI SUNRISE—discount package pricing when combining 6151-BW cabinets with coordinating tables (see pages 21 & 30 for tables and features)

For package price with Treatment Table, ORDER USING MODEL #s 7951-X or 7951-1-X

For package price with Scale Table, ORDER USING MODEL # 7851-X



Southwestfest Base & Wall Cabinets

- Wall unit has 4 doors/2 adjustable shelves
- Base unit has 4 doors/3 adjustable shelves and 3 drawers
- Base & wall units not sold separately
- Base unit shown with optional sink

6152-BW (base & wall cabinets are only sold in sets)

base	length	depth	height
	61"	18"	35"
	154.94 cm	45.72 cm	88.9 cm

wall	length	depth	height
	61"	12"	24"
	154.94 cm	30.48 cm	60.96 cm

SOUTHWESTFEST COMPLETE—discount package pricing when combining 6152-BW cabinets with coordinating tables (see pages 21 & 30 for tables and features)

For package price with Treatment Table, ORDER USING MODEL #s 7952-X or 7952-1-X

For package price with Scale Table, ORDER USING MODEL # 7852-X



Kangaroo Country Base & Wall Cabinets

- Wall unit has 4 doors/2 adjustable shelves
- Base unit has 4 doors/3 adjustable shelves and 3 drawers
- Base & wall units not sold separately
- Base unit shown with optional sink

6153-BW (base & wall cabinets are only sold in sets)

base	length	depth	height
	61"	18"	35"
	154.94 cm	45.72 cm	88.9 cm

wall	length	depth	height
	61"	12"	24"
	154.94 cm	30.48 cm	60.96 cm

KANGAROO COUNTRY COMPLETE—discount package pricing when combining 6153-BW cabinets with coordinating tables (see pages 21 & 31 for tables and features)

For package price with Treatment Table, ORDER USING MODEL #s 7953-X or 7953-1-X

For package price with Scale Table, ORDER USING MODEL # 7853-X

Kangaroo Country Cabinets also coordinate with Fun Series Outback Buggy models 7844 & 7040 (pages 8 & 12)

! WARNING: Products featured on this page can expose you to chemicals, including chromium, which is known to the State of California to cause cancer or reproductive toxicity.

For more information go to www.P65Warnings.ca.gov.

! WARNING: Products featured on this page can expose you to chemicals, including chromium, which is known to the State of California to cause cancer or reproductive toxicity.

For more information go to www.P65Warnings.ca.gov.

FUNSERIES CABINETS



Fun Series Cabinets have the same features as the Imagination Series Cabinets.

Schoolhouse Base & Wall Cabinets

- Wall unit has 4 doors/2 adjustable shelves
- Base unit has 4 doors/3 adjustable shelves and 3 drawers
- Base & wall units not sold separately
- Base unit shown with optional sink

6120-BW (base & wall cabinets are only sold in sets)

base	length	depth	height
	61"	18"	35"
	154.94 cm	45.72 cm	88.9 cm

wall	length	depth	height
	61"	12"	24"
	154.94 cm	30.48 cm	60.96 cm

ZOO BUS COMPLETE–discount package pricing when combining 6120-BW cabinets with coordinating tables (see pages 6 & 10 for tables and features)

For package price with Treatment Table, ORDER USING MODEL # 7020-X

For package price with Scale Table, ORDER USING MODEL # 7822-X

Firehouse Base & Wall Cabinets

- Wall unit has 4 doors/2 adjustable shelves
- Base unit has 4 doors/3 adjustable shelves and 3 drawers
- Base & wall units not sold separately
- Base unit shown with optional sink

6130-BW (base & wall cabinets are only sold in sets)

base	length	depth	height
	61"	18"	35"
	154.94 cm	45.72 cm	88.9 cm

wall	length	depth	height
	61"	12"	24"
	154.94 cm	30.48 cm	60.96 cm

ENGINE K-9 COMPLETE–discount package pricing when combining 6120-BW cabinets with coordinating tables (see pages 4 & 12 for tables and features)

For package price with Treatment Table, ORDER USING MODEL # 7030-X

For package price with Scale Table, ORDER USING MODEL # 7833-X

WARNING: Products featured on this page can expose you to chemicals, including chromium, which is known to the State of California to cause cancer or reproductive toxicity.

For more information go to www.P65Warnings.ca.gov.



Cool Park Campgrounds Base & Wall Cabinets

- Wall unit has 4 doors with 2 adjustable shelves
- Base unit has 4 doors/3 adjustable shelves and 3 drawers
- Base & wall units not sold separately
- Base unit shown with optional sink

6150-BW (base & wall cabinets are only sold in sets)

base	length	depth	height
	61"	18"	35"
	154.94 cm	45.72 cm	88.9 cm

wall	length	depth	height
	61"	12"	24"
	154.94 cm	30.48 cm	60.96 cm

COOL CAMPER COMPLETE–discount package pricing when combining 6150-BW coordinating cabinets with coordinating table (see page 9 for table features)

For package price with Treatment Table, ORDER USING MODEL # 7050-X

WARNING: This product can expose you to chemicals, including chromium, which is known to the State of California to cause cancer or reproductive toxicity.

For more information go to www.P65Warnings.ca.gov.

CABINET OPTIONS

Stainless Steel Sink and Gooseneck Faucet with Wing Levers

(shown on all cabinet photos)

- Choose your location in middle, on right or on left end of the base

022

Add a Drawer

- Available for any base model
- Maximum 5 drawer limit in each vertical cabinet section

044

WARNING: Options featured on this page can expose you to chemicals, including chromium, which is known to the State of California to cause cancer or reproductive toxicity.

For more information go to www.P65Warnings.ca.gov.

Door and Drawer Locks

- Individual cam lock for doors and drawers
- Independently operated
- Orders with multiple locks will be all keyed alike unless specified otherwise

055

Door Lock and Inside Latch Combo

- Used on double door units
- One door will have a lock
- The other door will have a slide latch on the inside back

066

OFFICE ACCESSORIES

No office is complete without accessories. Clinton offers a variety of pediatric and non-pediatric specific accessories to fit your needs.

Koala Laminate Foot Stool

- Heavy laminate wood construction
- Non-skid tread
- Your choice of laminate
- Koala graphic stickers/2 per stool

10-K	length	depth	height
	20"	16"	7"
	50.8 cm	40.64 cm	17.78 cm

Dalmatian Laminate Foot Stool

- Heavy laminate wood construction
- Non-skid tread
- Your choice of laminate
- Dalmatian graphic stickers/2 per stool

10-D	length	depth	height
	20"	16"	7"
	50.8 cm	40.64 cm	17.78 cm

Hyena Laminate Foot Stool

- Heavy laminate wood construction
- Non-skid tread
- Your choice of laminate
- Hyena graphic stickers/2 per stool

10-H	length	depth	height
	20"	16"	7"
	50.8 cm	40.64 cm	17.78 cm

More stool designs available.
Visit www.clinton-ind.com for complete selection

WARNING: Products featured on this page can expose you to chemicals, including vinyl chloride, which is known to the State of California to cause cancer.

For more information go to www.P65Warnings.ca.gov.



Black Frame Chair/No Arms

- Nylon glides
- Contoured seat
- 2" (5.08 cm) thick firm foam padded seat
- Now with wall bumper
- Your choice of upholstery colors
- Box Dimensions 22" x 21" x 27" (55.88 cm x 53.34 cm x 68.58 cm)

C-40B	seat	seat height
	17 1/2" x 18"	17 3/4"
	44 cm x 46 cm	46 cm

F-Series Chair without Arms

- Upholstered backrest front and back
- Ships flat
- Easy Assembly
- Weight: 14 lbs.
- Box dimensions: 26.25"x23"x7.5"

C-40F	Overall	seat height
	20" x 22" x 32"	17"
	51 cm x 56 cm x 81 cm	43 cm

Black Frame Chair with Arms

- Nylon glides
- Contoured seat
- 2" (5.08 cm) thick firm foam padded seat
- Now with wall bumper
- Your choice of upholstery colors
- Box Dimensions 22" x 21" x 27" (55.88 cm x 53.34 cm x 68.58 cm)

C-50B	seat	seat height
	17 1/2" x 18"	18"
	44 cm x 46 cm	46 cm

F Series Chair with Arms

- Upholstered backrest front and back
- Ships flat
- Easy Assembly
- Weight: 17 lbs.
- Box dimensions: 27.5"x23"x8.5"

C-50F	Overall	seat height
	23" x 22" x 32"	17"
	58 cm x 56 cm x 81 cm	43 cm

WARNING: Products featured on this page can expose you to chemicals, including diisononyl phthalate (DINP), which is known to the State of California to cause cancer.

For more information go to www.P65Warnings.ca.gov.

Treatment Cabinet with 2 Doors & 1 Drawer

- 1 adjustable shelf
- Drawer with metal sides that hold up to 75 lbs. (34.01 kg)
- All laminate construction

8821	length	depth	height
	24"	18"	35"
	60.96 cm	45.72 cm	88.9 cm



8821

Treatment Cabinet with 2 Doors & 2 Drawers

- 1 adjustable shelf
- Drawers with metal sides that hold up to 75 lbs. (34.01 kg)
- All laminate construction

8822	length	depth	height
	24"	18"	35"
	60.96 cm	45.72 cm	88.9 cm



8822

⚠ WARNING: Products featured on this page can expose you to chemicals, including chromiun, which is known to the State of California to cause cancer and reproductive harm.

For more information go to www.P65Warnings.ca.gov.

Treatment Cabinet with 5 Drawers

- Drawers with metal sides that hold up to 75 lbs. (34.01 kg)
- All laminate construction

8805	length	depth	height
	24"	18"	35"
	60.96 cm	45.72 cm	88.9 cm



8805

Mobile Treatment Cabinet with 2 Doors & 2 Drawers

- 1 adjustable shelf
- Drawers with metal sides that hold up to 75 lbs. (34.01 kg)
- All laminate construction
- Mounted on 3" dual wheel, swivel casters (2 locking)
- Plastic bumpers on each side of the base

8922	length	depth	height
	24"	18"	35"
	60.96 cm	45.72 cm	88.9 cm



8922

⚠ WARNING: Products featured on this page can expose you to chemicals, including vinyl chloride, which is known to the State of California to cause cancer.

For more information go to www.P65Warnings.ca.gov.



Unlabeled Clear Sundry Jars

- Set of 5 with clear tops
- Sold in sets only

T-79	diameter	height
	4 3/8"	6 1/2"
	11.11 cm	16.51 cm



Labeled Clear Sundry Jars

- Set of 5 with clear tops
- Sold in sets only

T-70	diameter	height
	4 3/8"	6 1/2"
	11.11 cm	16.51 cm



Labeled Clear "Animal Pals" Sundry Jars

- Set of 5 with clear tops
- Sold in sets only



T-77	diameter	height
	4 3/8"	6 1/2"
	11.11 cm	16.51 cm

! WARNING: Model T-77 can expose you to chemicals, including vinyl chloride, which is known to the State of California to cause cancer.

For more information go to www.P65Warnings.ca.gov.



Labeled Opaque Sundry Jars

- Set of 5 with clear tops
- Sold in sets only

T-60	diameter	height
	4 3/8"	6 1/2"
	11.11 cm	16.51 cm

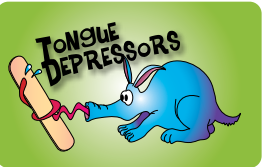
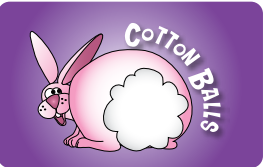


Labeled Opaque "Animal Pals" Sundry Jars

- Set of 5 with clear tops
- Sold in sets only



T-66	diameter	height
	4 3/8"	6 1/2"
	11.11 cm	16.51 cm



! WARNING: Model t-66 can expose you to chemicals, including vinyl chloride, which is known to the State of California to cause cancer.

For more information go to www.P65Warnings.ca.gov.

Clear Acrylic Wall Mount Jar Rack

- Jars sold separately in sets only

T-88	length	width
	24"	7 1/2"
	60.95 cm	44.45 cm





Clinton Kids™ graphics are a great way to add color and fun to doors, tables and walls. Clinton offers three series of graphics.

The **Clinton Complete™ Series** of graphics is especially designed to coordinate with Clinton Complete tables and cabinets for a total designed office look.

Our **Signs Series** offers original Clinton illustrations in functional fun signs for office and exam room designations.

Our **Select Series** is designed to add smaller graphics to our Select Series tables or anywhere a little light-hearted fun is needed.

Whatever you choose, Clinton graphics are the right choice for any pediatric space.

CLINTON COMPLETE™ SERIES

All Clinton Complete stickers are printed on tough, adhesive-backed vinyl that easily adheres to most smooth wall surfaces.

(All Clinton Complete wall sticker sizes are approximate)

Koala Pyramid Wall Sticker

- Coordinates with Zoo Bus tables, Schoolhouse cabinets, Kangaroo Country cabinets and tables, plus all Outback Buggy tables

01-CC	width	height
	34"	73"
	86.36 cm	185.41 cm

⚠ WARNING: This product can expose you to chemicals, including vinyl chloride, which is known to the State of California to cause cancer.

For more information go to www.P65Warnings.ca.gov.



01-CC

Brick Wall Sticker

- Coordinates with Alley Cats & Dogs cabinets and tables, Firehouse cabinets and Engine K-9 tables

02-CC	width	height
	48"	55"
	121.19 cm	139.69 cm

Tree Wall Sticker

- Coordinates with Rainforest Follies and Cool Camper cabinets and tables

03-CC	width	height
	50"	78"
	127 cm	198.11 cm

Downspout Cats Wall Sticker

- Coordinates with Alley Cats & Dogs cabinets and tables

04-CC	width	height
	16"	84"
	40.63 cm	213.36 cm

Fire Dogs Wall Sticker

- Coordinates with Engine K-9 tables and firehouse cabinets

05-CC	width	height
	20"	84"
	50.80 cm	213.36 cm

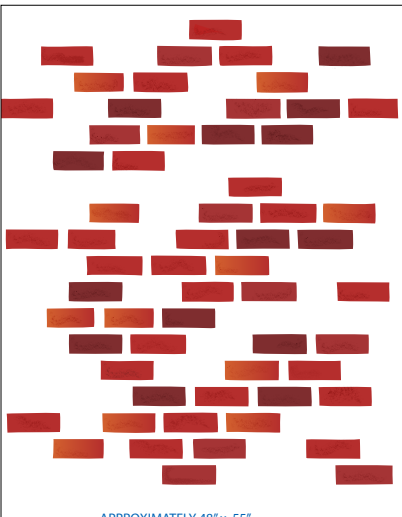
Ocean Wave Wall Sticker

- Coordinates with Ocean Commotion cabinets and tables, and Merry Mermaids Scale Table.

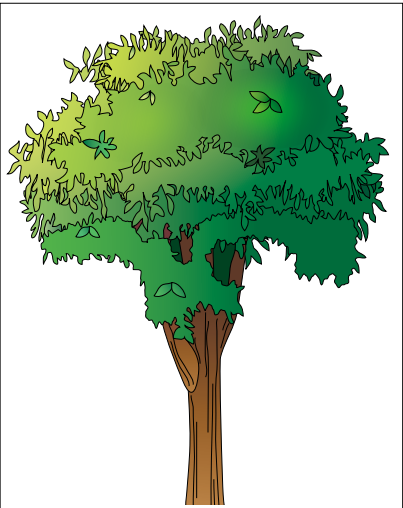
06-CC	width	height
	120"	12"
	304.79cm	30.47 cm

⚠ WARNING: Products featured on this page can expose you to chemicals, including vinyl chloride, which is known to the State of California to cause cancer.

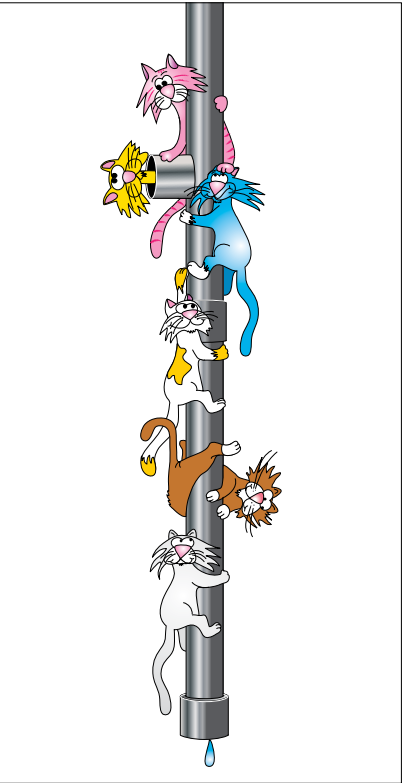
For more information go to www.P65Warnings.ca.gov.



02-CC



03-CC



04-CC



05-CC



06-CC



School of Fish Wall Stickers

- Coordinates with Ocean Commotion cabinets and tables, and Merry Mermaids Scale Table.

07-CC-L (Left Facing)	width	height
Barracuda	15" (185.41 cm)	4 1/2" (185.41 cm)
Blue Fish	7" (17.78 cm)	5 1/2" (13.96 cm)
Red Fish	7" (17.78 cm)	5 1/2" (13.96 cm)
Green Fish 1	11" (27.93 cm)	5" (12.7 cm)
Green Fish 2	10" (25.4 cm)	3 1/2" (8.89 cm)
Orange Fish	6" (15.23 cm)	6 1/2" (16.51 cm)
Yellow Fish	8" (20.31 cm)	6 1/2" (16.51 cm)

07-CC-R (Right Facing)

Sea Life Wall Sticker

- Coordinates with Ocean Commotion cabinets and tables, and Merry Mermaids Scale Table.

08-CC	width	height
	48"	77"
	121.91 cm	195.57 cm

Space Travelers Wall Sticker

- Coordinates with Space Place cabinets and tables

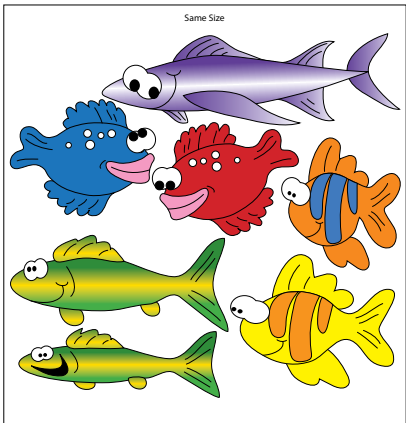
9-CC	width	height
	48"	43"
	121.91 cm	109.22 cm

Ice Mountain 1 & 2 Wall Stickers

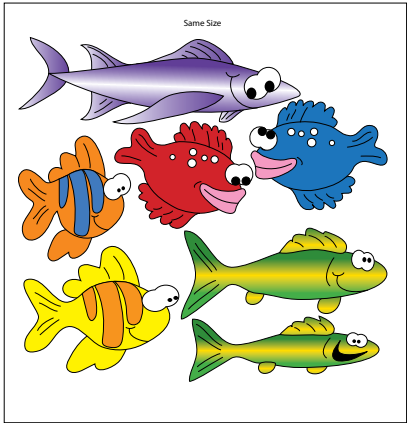
- Coordinates with Cool Pals cabinets and tables

10-CC-1	width	height
	50"	78"
	127 cm	198.11 cm

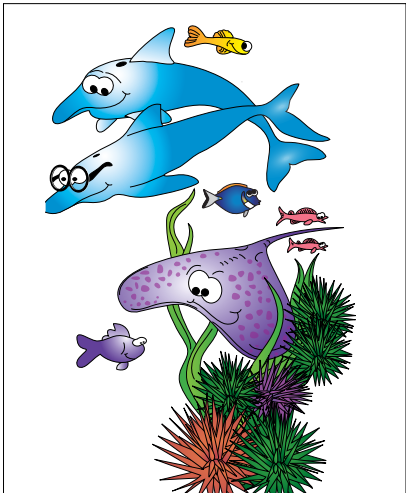
10-CC-2	width	height
	50"	64"
	127 cm	162.55 cm



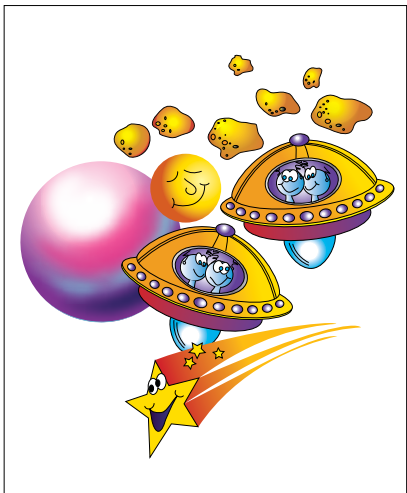
07-CC-L



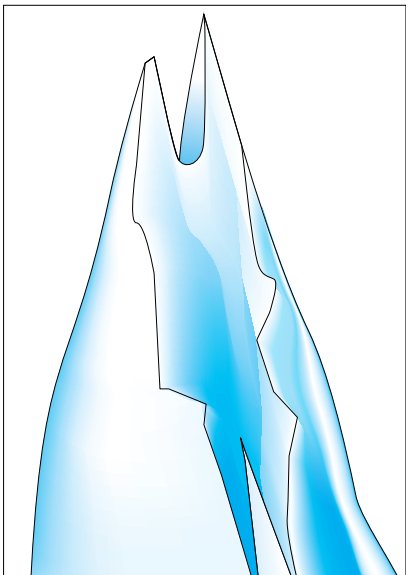
07-CC-R



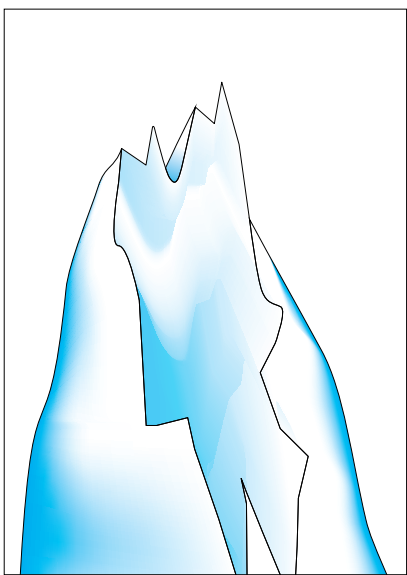
08-CC



09-CC



10-CC-1



10-CC-2

! WARNING: Products featured on this page can expose you to chemicals, including vinyl chloride, which is known to the State of California to cause cancer.

For more information go to www.P65Warnings.ca.gov.



Cave Paintings Wall Stickers

- Coordinates with Dino Days cabinets and tables

11-CC	width	height
Bison	10 1/2" (27 cm)	7 1/2" (19 cm)
Stag	9 1/2" (24 cm)	6 1/2" (17 cm)
Lg. Horse	10 1/2" (27 cm)	5 1/2" (14 cm)
Sm. Horse	7" (18 cm)	4" (10 cm)
Lg. Caribou	8 1/2" (22 cm)	6 1/2" (17 cm)
Sm. Caribou	6 1/2" (17 cm)	5" (13 cm)

Pterodactyls Wall Sticker

- Coordinates with Dino Days cabinets and tables

12-CC	width	height
	38"	40"
	97 cm	102 cm

Elephant Wall Sticker

- Coordinates with Serengeti Sunrise cabinets and tables

13-CC	width	height
	58"	50"
	147.31 cm	127 cm

Acacia Tree Wall Sticker

- Coordinates with Serengeti Sunrise cabinets and tables

14-CC	width	height
	50	74"
	127 cm	187.95 cm

Cactus Wall Sticker

- Coordinates with Southwestfest cabinets and tables

15-CC	width	height
	26"	54"
	66 cm	137 cm

Joshua Tree Wall Sticker

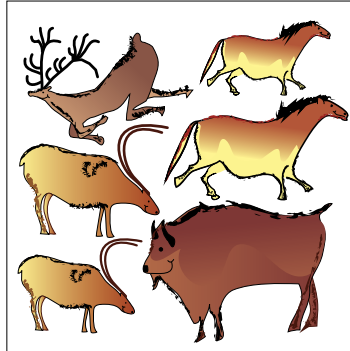
- Coordinates with Southwestfest cabinets and tables

16-CC	width	height
	50"	64"
	127 cm	163 cm

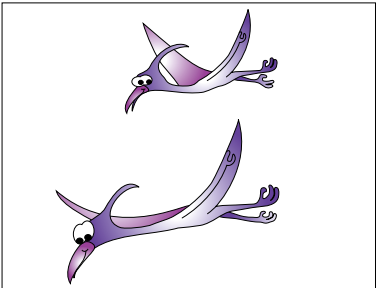
Bananna Tree Wall Sticker

- Coordinates with Rainforest Follies cabinets and tables

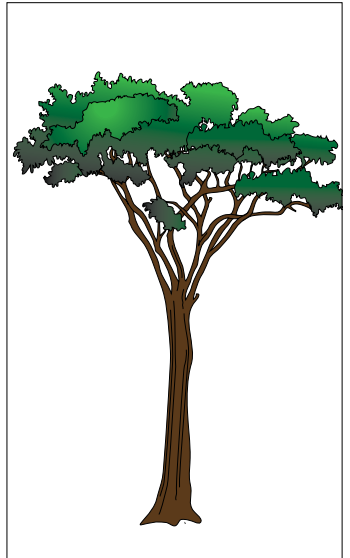
18-CC	width	height
	50"	50"
	127 cm	127 cm



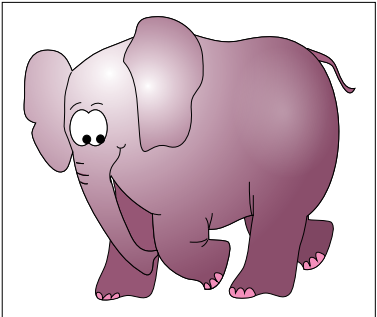
11-CC



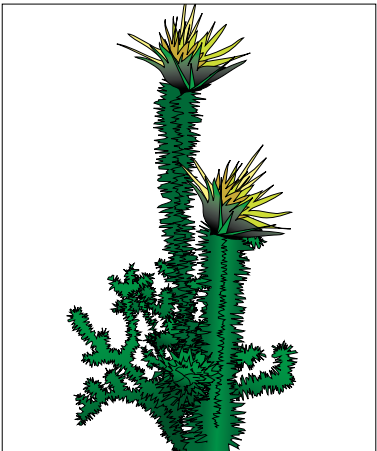
12-CC



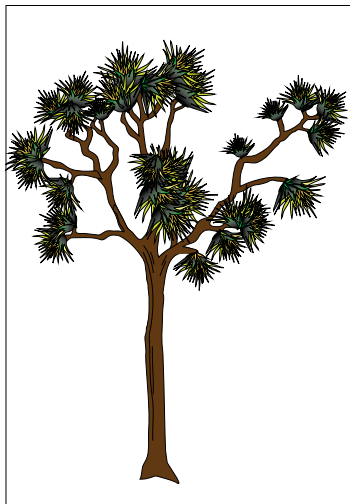
14-CC



13-CC



15-CC



16-CC



18-CC

! WARNING: Products featured on this page can expose you to chemicals, including vinyl chloride, which is known to the State of California to cause cancer.

For more information go to www.P65Warnings.ca.gov.


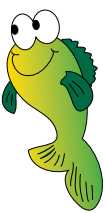
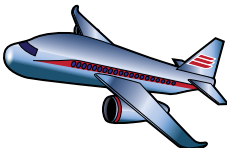
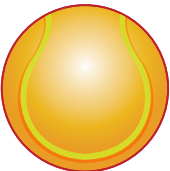




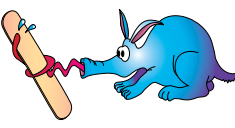
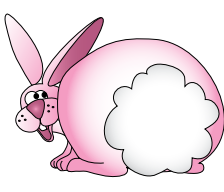
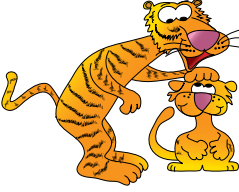







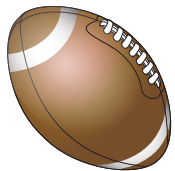

SELECT SERIES

The **Clinton Select Series** of graphics gives you the ability to customize practically anything in the office. Add them to our Select Series exam tables, scale tables or even on cabinet doors. They work well anywhere a bit of fun is needed.

Printed in vibrant colors on durable adhesive-backed vinyl, they are washable and resist tearing and peeling when applied to a clean smooth surface.

Our Select Series Graphics are all sold individually.

(All Select Series Graphics sticker sizes are approximate.)

Zebra  9721 14" h (36 cm)	Fish  9722 14" h (36 cm)	Airplane  9723 10" h (25 cm)	Tennis Ball  9724 11" h (28 cm)	Firefighter  9725 14" h (36 cm)
Koala  9726 14" h (36 cm)	Basketball  9727 12" h (30 cm)	Friendly Bear  9729 14" h (36 cm)	T-Depressor eater  9731 6" h (15 cm)	Cottontail  9732 11" h (28 cm)
Tiger Buddies  9733-A 14" h (36 cm)	Bandage Tiger  9735 7" h (18 cm)	Gauze Raccoon  9736 4" h (10 cm)	Smiling Seals  9737 14" h (36 cm)	Swab Beaver  9741 6" h (15 cm)
Baseball  9742 12" h (30 cm)	Froggie  9743 10" h (25 cm)	Hockey Penguin  9744 9" h (23 cm)	Football  9745 10" h (25 cm)	

! WARNING: Products featured on this page can expose you to chemicals, including vinyl chloride, which is known to the State of California to cause cancer.

For more information go to www.P65Warnings.ca.gov.

Clinton Kids™ Office Sign Series

combines original Clinton illustrations and everyday office signage to guide staff, young patients and parents to the correct areas in busy practices

Each sign is printed in vibrant colors and pre-mounted on ridged plastic with hook and loop strips so they easily mount to any smooth surface.

Each sign is sold individually as shown.

Office Signs	width	height
	7 1/2"	5 1/2"
	19.04 cm	13.96 cm

Office Signs



EX21



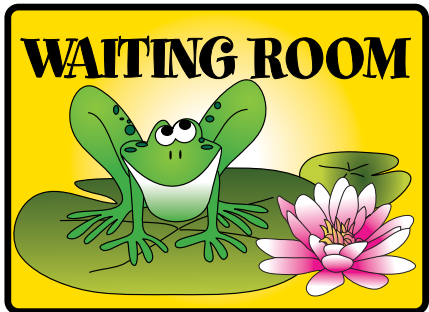
EX23



EX24



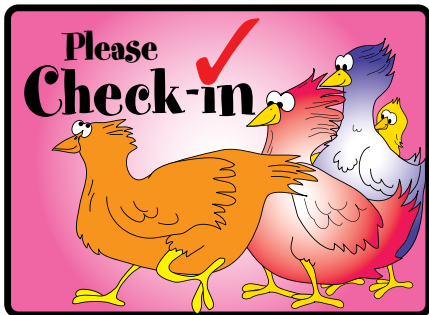
EX25



EX26



EX27



EX28

! WARNING: Products featured on this page can expose you to chemicals, including vinyl chloride, which is known to the State of California to cause cancer.

For more information go to www.P65Warnings.ca.gov.

SIGN SERIES

The Clinton Kids™ Exam Room Sign Series combines original Clinton illustrations and room designations for the ultimate in fun pediatric signage.

Exam Room signs are printed in vibrant colors and pre-mounted on ridged plastic with hook and loop strips so they easily mount to any smooth surface.

Each sign is sold individually as shown.

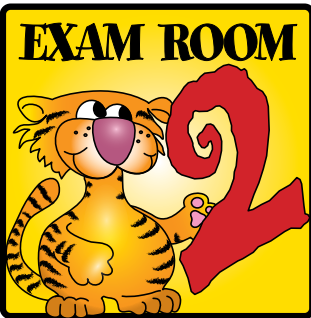
Exam Room Signs/Animal Friends Series

Friendly animals and big bold number add an extra touch to pediatric offices.

Exam Room Signs	width	height
	5 1/2"	5 1/2"
	13.96 cm	13.96 cm



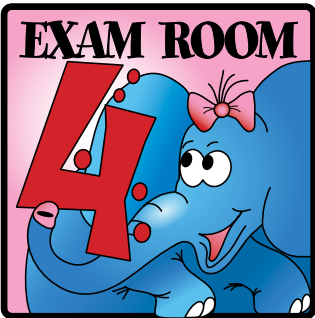
EX1



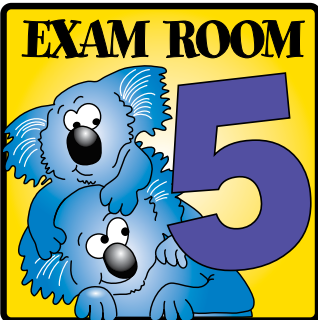
EX2



EX3



EX4



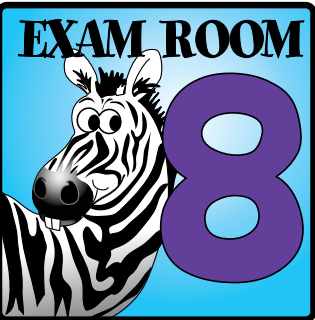
EX5



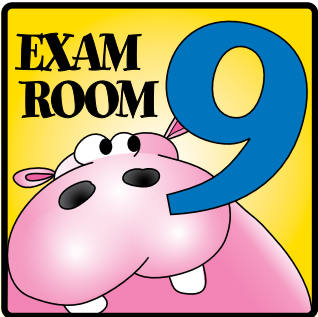
EX6



EX7



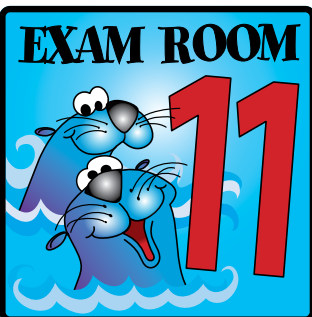
EX8



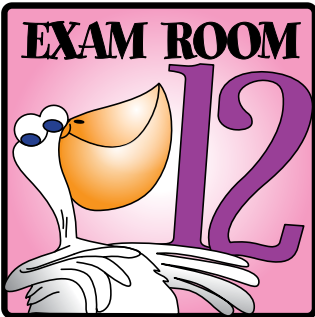
EX9



EX10



EX11



EX12

! WARNING: Products featured on this page can expose you to chemicals, including 1, 3-Butadiene, which is known to the State of California to cause cancer or reproductive harm.

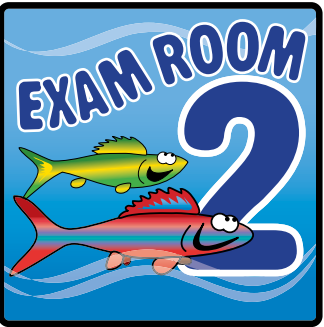
For more information go to www.P65Warnings.ca.gov.

Exam Room Signs/Ocean Series

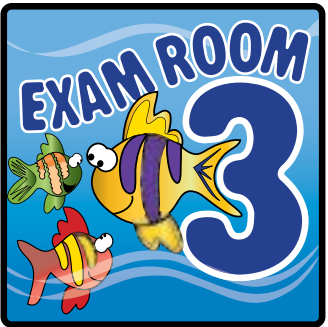
Add an extra splash to pediatric spaces with these colorful sea creatures and big blue numbers.



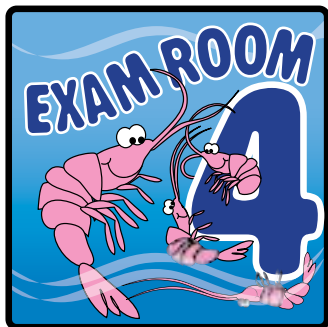
EX1-O



EX2-O



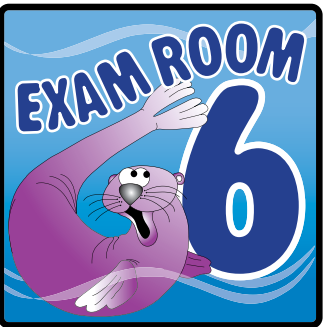
EX3-O



EX4-O



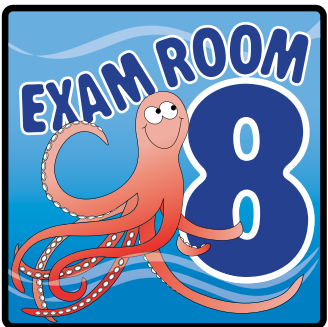
EX5-O



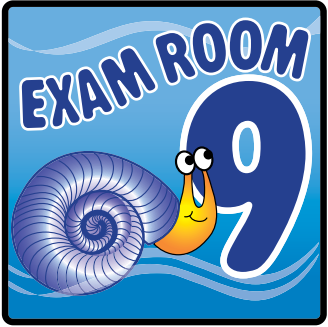
EX6-O



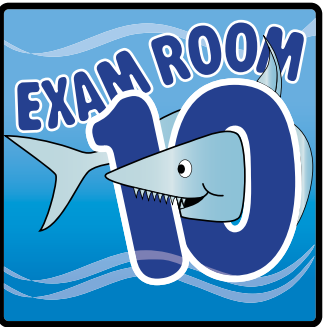
EX7-O



EX8-O



EX9-O



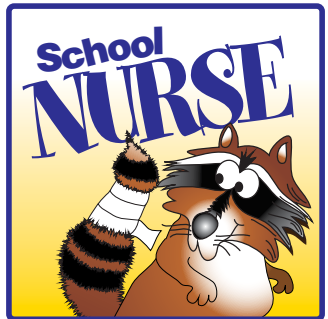
EX10-O



EX11-O



EX12-O



SN-1

School Nurse Sign	width	height
	5 1/2"	5 1/2"
	13.96 cm	13.96 cm

! WARNING: Products featured on this page can expose you to chemicals, including 1, 3-Butadiene, which is known to the State of California to cause cancer or reproductive harm.

For more information go to www.P65Warnings.ca.gov.



800-441-9131 • 717-848-3519

Toll-Free Fax 866-522-1233

Fax 717-843-5871

www.clinton-ind.com