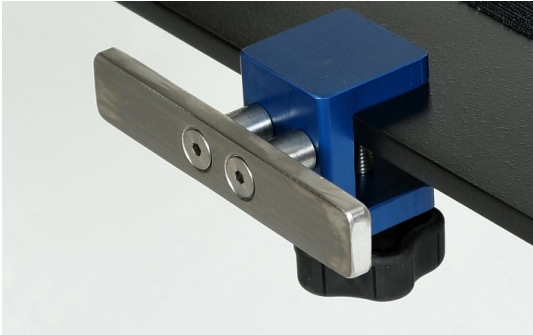


MCM Insta-Rail | MCM 168



Stock Photo - Options May Vary

FACTORY NEW

The MCM 168 Insta-Rail is an essential accessory for enhancing the functionality of imaging tables in hospitals and clinics. It easily clamps onto most imaging tables with a 1½" clamp opening, offering quick adaptability for various medical accessories. Designed for rapid installation, this rail helps streamline setup and improve overall efficiency.

Constructed from durable stainless steel, the MCM 168 withstands the demands of busy medical environments. Its compact design measures 6" long, 1⅛" high, and ⅜" thick, providing strong support for essential tools while maximizing available space on crowded imaging tables.

The rail matches standard rails on U.S. surgical tables, ensuring compatibility with various medical equipment and seamless integration with existing systems. The simple design enables easy installation, reducing setup time and complexity while improving access to tools and workflow efficiency.

**Brochure and images are a general overview of the product. Actual product options may vary.*

Toll-Free 800-627-3215 | Local 813-740-8640

salesteam@venturemedical.com

[View this product online →](#)