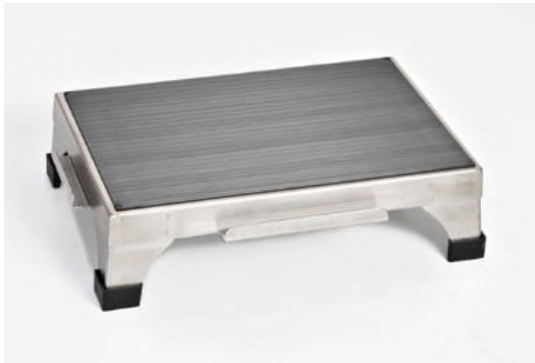


MCM Stacking/Interlocking Step Stool | MCM 140



Stock Photo - Options May Vary

FACTORY NEW

MCM 140: Stacking/Interlocking Step Stool. The MCM 140 is made by Mid Central Medical, a respected American manufacturer known for producing dependable, high-quality medical equipment. Designed with healthcare professionals in mind, this stool offers both safety and functionality in fast-paced clinical environments.

Built from fully welded stainless steel, the MCM 140 delivers exceptional strength and long-term durability. The slip-proof rubber tread provides secure footing and helps prevent slips or falls during use.

This safety feature is especially important in surgical rooms, exam rooms, and other high-traffic healthcare areas. One of the stool's most useful design elements is its ability to interlock with other MCM 140 stools.

FEATURES

- Stainless Steel, Fully Welded Construction
- Slip-Proof Rubber Tread on Top Surface for Safety
- Stools are Designed to Interlock to create the Desired Size Platform
- Tip-Resistant

SPECIFICATIONS

- Construction: 16 Gauge, # 304 Stainless Steel
- Stool Dimensions: 12" D x 18"W x 5"H

**Brochure and images are a general overview of the product. Actual product options may vary.*

Toll-Free | Local
800-627-3215 | 813-740-8640

salesteam@venturemedical.com

[View this product online →](#)